

# TATES

020 7602 6020

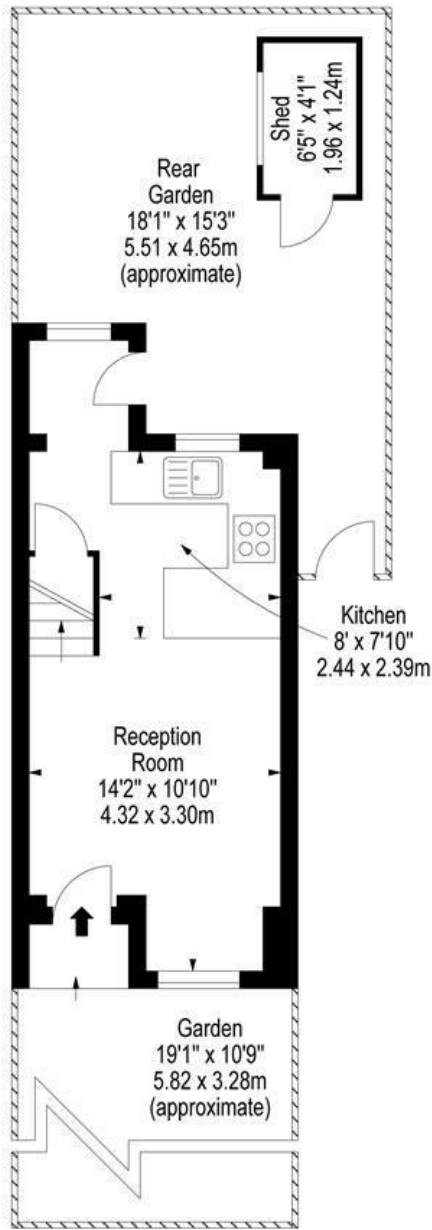


## Charlotte Mews, London W14 0QW

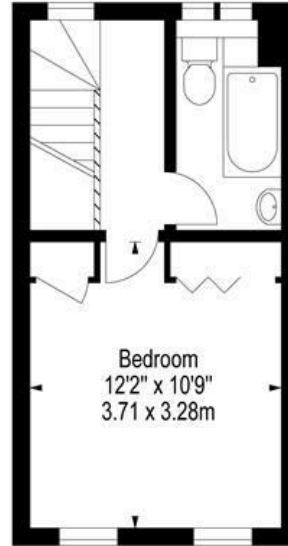
**£625,000**

- Mews House
- Off Street Parking
- Unique Opportunity
- One Bedroom
- Garden
- Close to West Kensington and Barons Court tube stations

Charlotte Mews  
1 Bedroom House



Ground Floor



First Floor

Approx Gross Internal Area **473 Sq Ft - 43.76 Sq M**  
(Excluding Shed)

Floor Plan Supplied For Identification Purposes Only And May Not Be Accurate  
Floor Plan by [www.elegantmediasolution.com](http://www.elegantmediasolution.com)

Whilst these particulars are produced in good faith and are believed to be correct, no guarantee is given, nor any responsibility accepted, by Tates nor by any of its representatives, for their accuracy. The particulars do not constitute part of any offer or contract, and it is recommended that such things as measurements, condition, structure, services, appliances, fixtures and fittings and facilities are all independently assessed by the prospective purchaser or renter of the subject property prior to committing to any contract.

Energy Efficiency Rating		Current	Potential
Very energy efficient - lower running costs			
(92 plus) <b>A</b>			<b>90</b>
(81-91) <b>B</b>			
(69-80) <b>C</b>			
(55-68) <b>D</b>		<b>70</b>	
(39-54) <b>E</b>			
(21-38) <b>F</b>			
(1-20) <b>G</b>			
Not energy efficient - higher running costs			
<b>England &amp; Wales</b>		EU Directive 2002/91/EC	

135 Hammersmith Road, West Kensington, London W14 0QL

[mail@tatesestates.co.uk](mailto:mail@tatesestates.co.uk)

[tatesestates.co.uk](http://tatesestates.co.uk)

Tates (Agents) Ltd. Registered in England and Wales No. 02356337  
Registered Office: Imperial House, 8 Keane Street, London WC2B 4AS

